

## **12V Seven LED lights (less than 1 Watt, more than 30,000 mcd):**

These lights work with 5 to 13 V DC voltages as well as 2 AA batteries (3 AA for Blue or Green). The brightness of these flashers stays the same as the source voltage is dropped below 12V, therefore it's an ideal emergency **flasher that blinks very bright on a stopped car for months** before an engine restart.

**1. FL-307** lights, 7 LED lights, blinks or turns on full or half intensity upon power up per on board jumper setting. 5 colors **RED, YELLOW, ORANGE, BLUE, GREEN**. The 2 mounting holes are 22 mm

apart, the board is 56 mm by 34 mm.

FL-307-R, FL-307-Y, FL-307-O \$7.00

FL-307-B \$10, FL-307-G \$9

Jumper setting:

J2 On J3 Off ,half intensity On

J2 On J3 On ,Blink

J2 Off J3 On ,Off

J2 Off J3 Off ,full intensity On

Maybe wired to existing hazard switch or a separate dedicated On/Off switch.

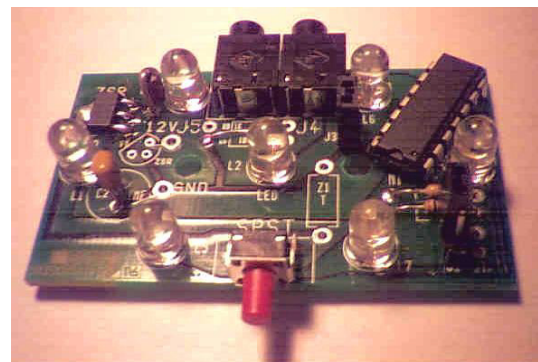
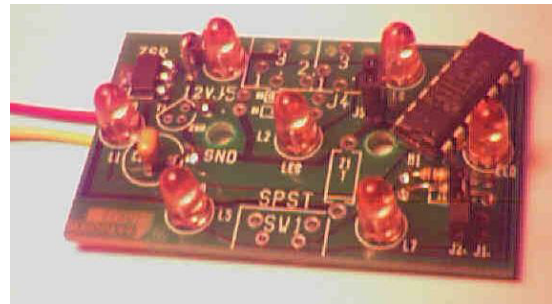
**2. FL-207** lights, have on board pushbutton Off-On-Blink which maybe over ride by on board jumpers and two 2.5 mm jacks for external voltage.

has 16 turn signal arrows. 5 colors **RED, YELLOW, ORANGE, BLUE, GREEN**.

FL-207-R, FL-207-Y, FL-207-O \$8.00, FL-207-B \$11, FL-207-G \$10

Jumper settings: Same as FL-307 except

J2 Off J3 On ,enables pushbutton switch.



**3. FL-107** lights, have on board pushbutton Off-On-Blink which maybe over ride by on board jumpers and a 2.5 mm jacks for external voltage, a plastic case that holds the light and 2 AA batteries (for Red, Yellow or Orange lights).

5 colors **RED, YELLOW, ORANGE, BLUE, GREEN**.

FL-107-R, FL-107-Y, FL-107-O \$9.00

FL-107-B \$12

FL-107-G \$11

Jumper settings: Same as FL-307 except

J2 Off J3 On ,enables pushbutton switch.

**4. Cigarette lighter plug /5' wire /2.5 mm plug**  
\$3 each

